





“You’re at a teaching hospital.
Hence, all the tests.”

Goals

- How to ID projects
- Tips on engagement of clinicians and champions
- Metrics followed
- How will this provide better care

How to identify projects

- Self assessment
- Patient surveys
- Formal reviews – QI rounds
- Quality indicators

LEADS domain: Engagement

- Communicate effectively
- Develop others
- Contribute to healthy organization
- Build teams

Metrics

- Number of consults in PAC – anesthesia, GIM and dual
- Number of tests – ECG, CXR, GR/S, INR/PTT, ECG, Renal
- Cost of preoperative tests
- Number of surgeons using algorithm
- Number of cancelled or delayed surgeries

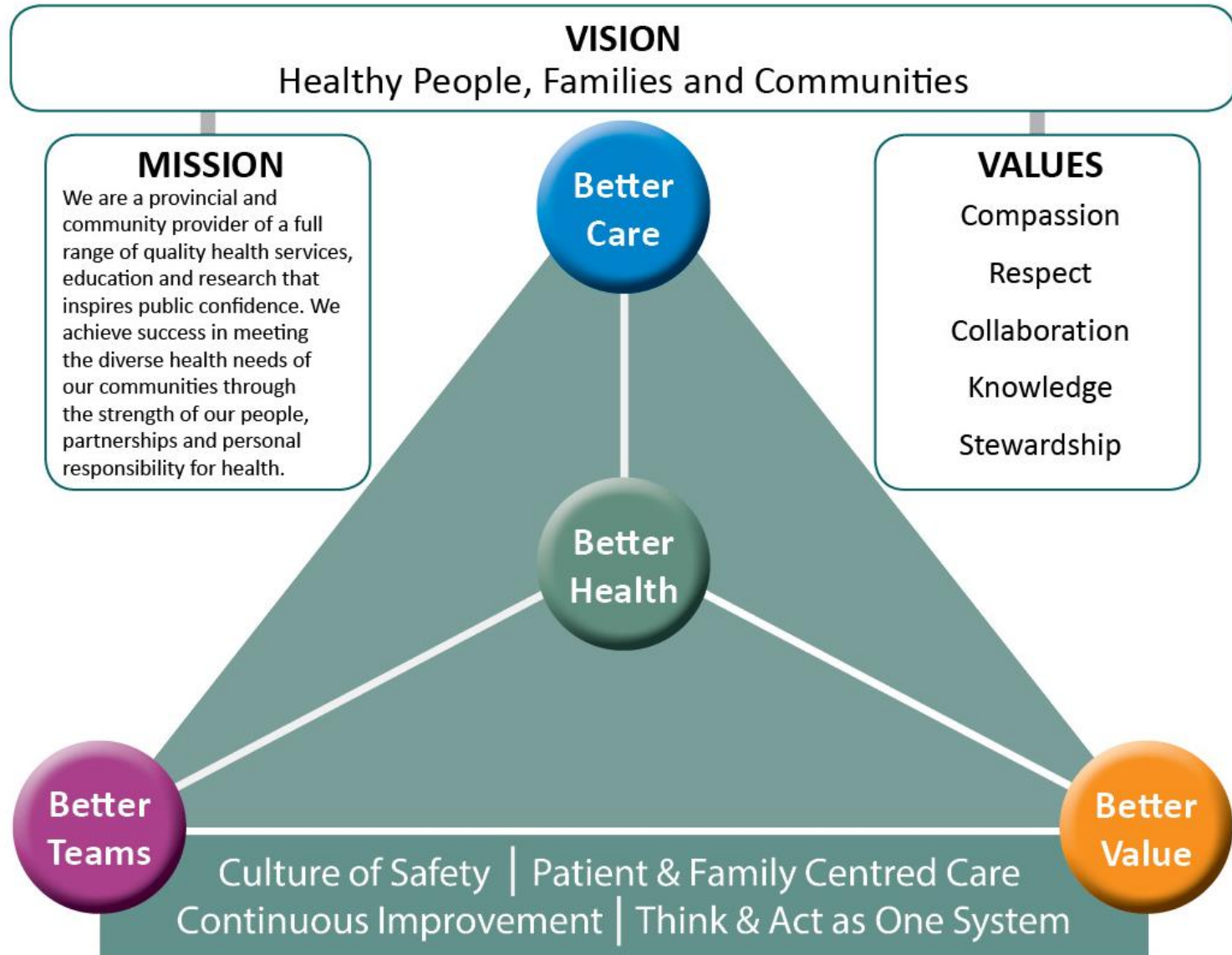
Better care

- Improved access
- Decrease in testing - decrease unnecessary treatment – decrease harm
- Decrease cost
- Decrease out of hospital risk
- Improved team communication
- Better flow in system
- ID of other opportunities for improvement

Appropriateness – key thoughts

- The patient will tell you
- Work as a team
- Measure
- Communicate
- Manage champions and opponents equally

RQHR Strategic Framework



Leads framework

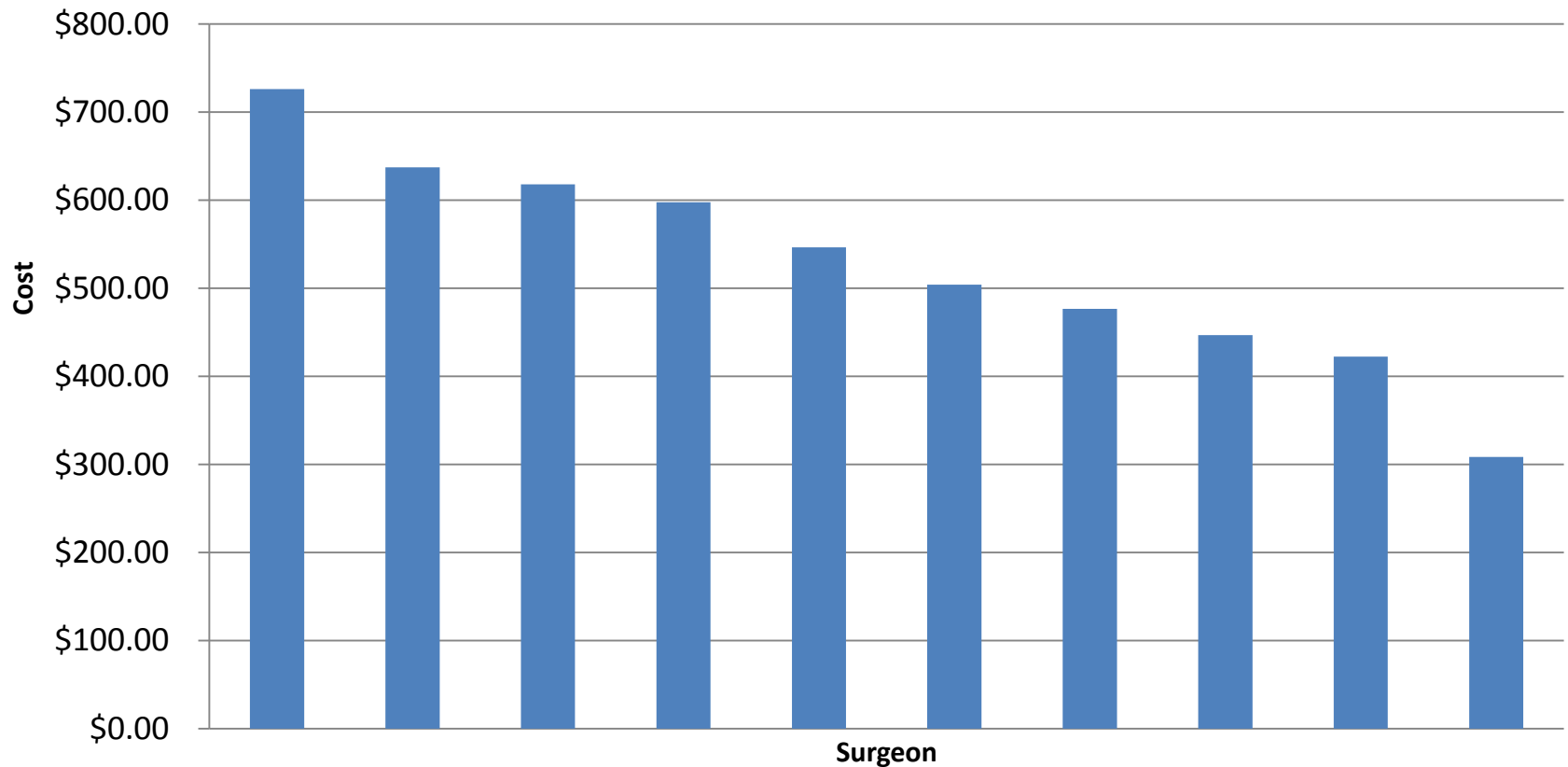
- Lead self
- Engage others
- Achieve results
- System transformation
- Develop coalitions

Background

- RQHR completed 1803 elective joint replacements in the 2014/15 fiscal year
- Patients receive a pre-op education class and visit at the Surgical Assessment Centre
- Pre-op investigations are ordered by the surgeon on the surgical booking form and arranged by Pre-Admission Clinic (PAC) staff

How do pre-op orders vary in cost by surgeon?

Average Cost per Patient by Surgeon



Projected dollar savings...

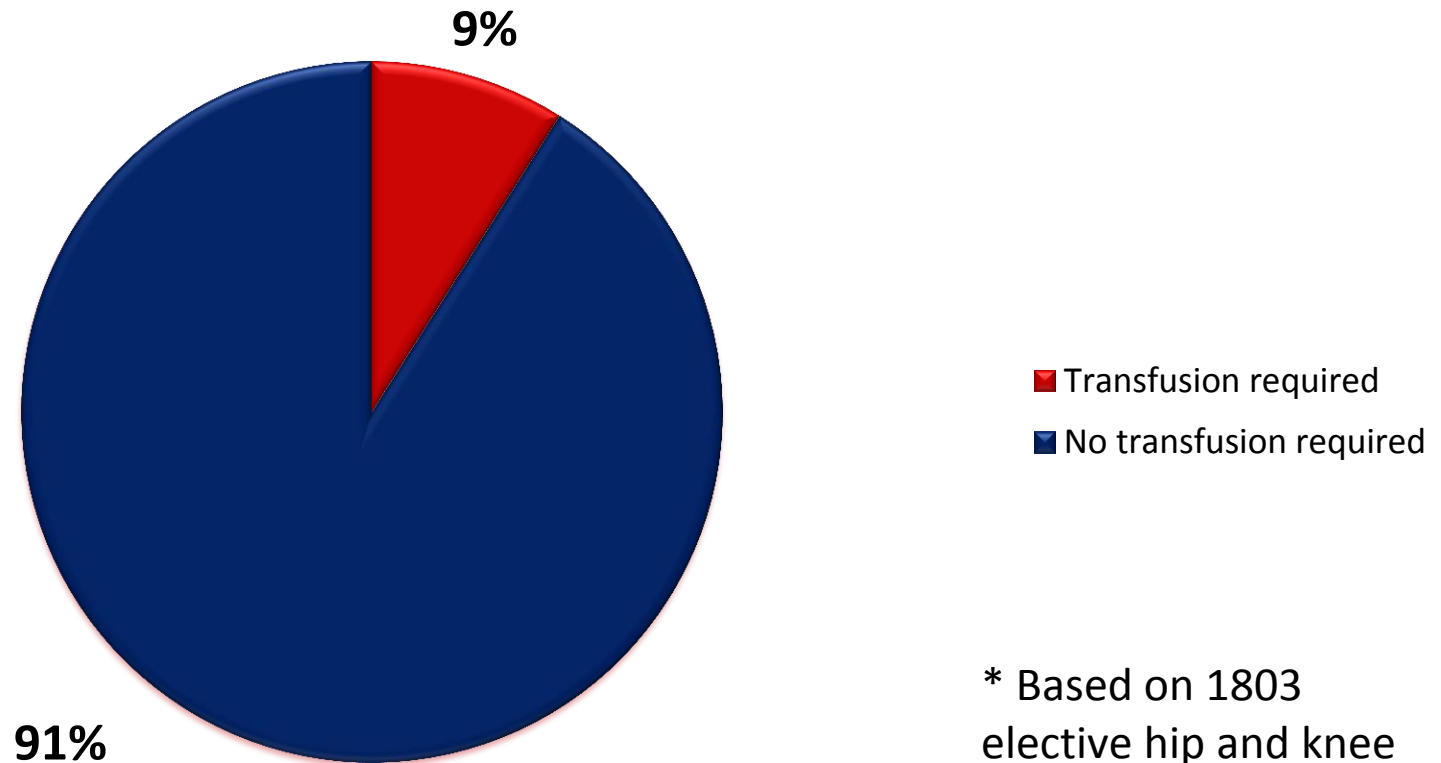
- Our results estimate use of the algorithm in the 2014/15 fiscal year for elective joints would have seen savings of \$444,405.18

A further finding...looking into the need for a universal group and screen

- Pre-operative group and screens are costly and doing these just-in-time could have benefits to patients, providers, as well as decreasing healthcare costs

What is RQHR's Transfusion Rate for Elective Joint Replacements?

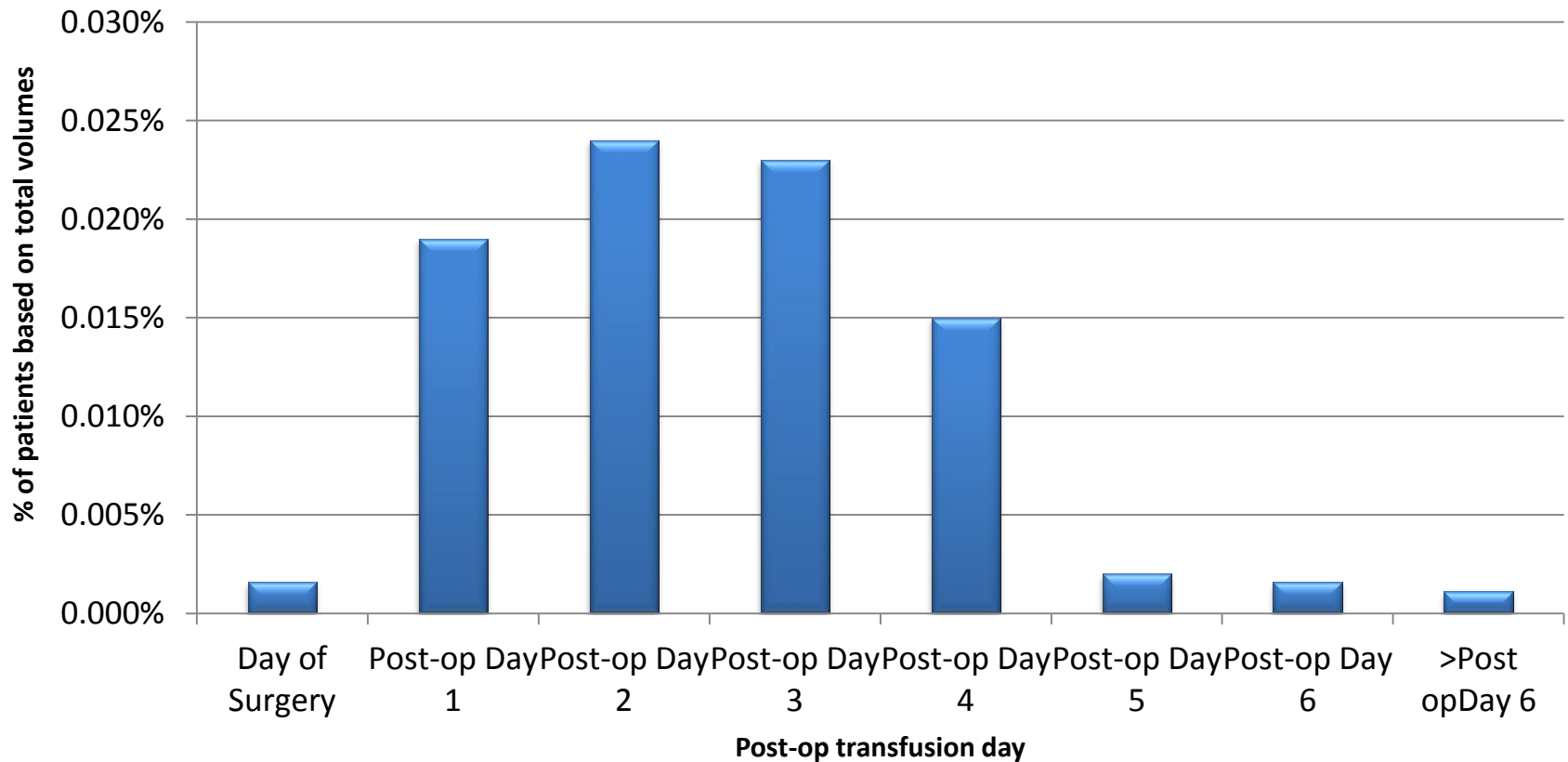
RQHR 2014/15 Transfusion Rate *



* Based on 1803 elective hip and knee

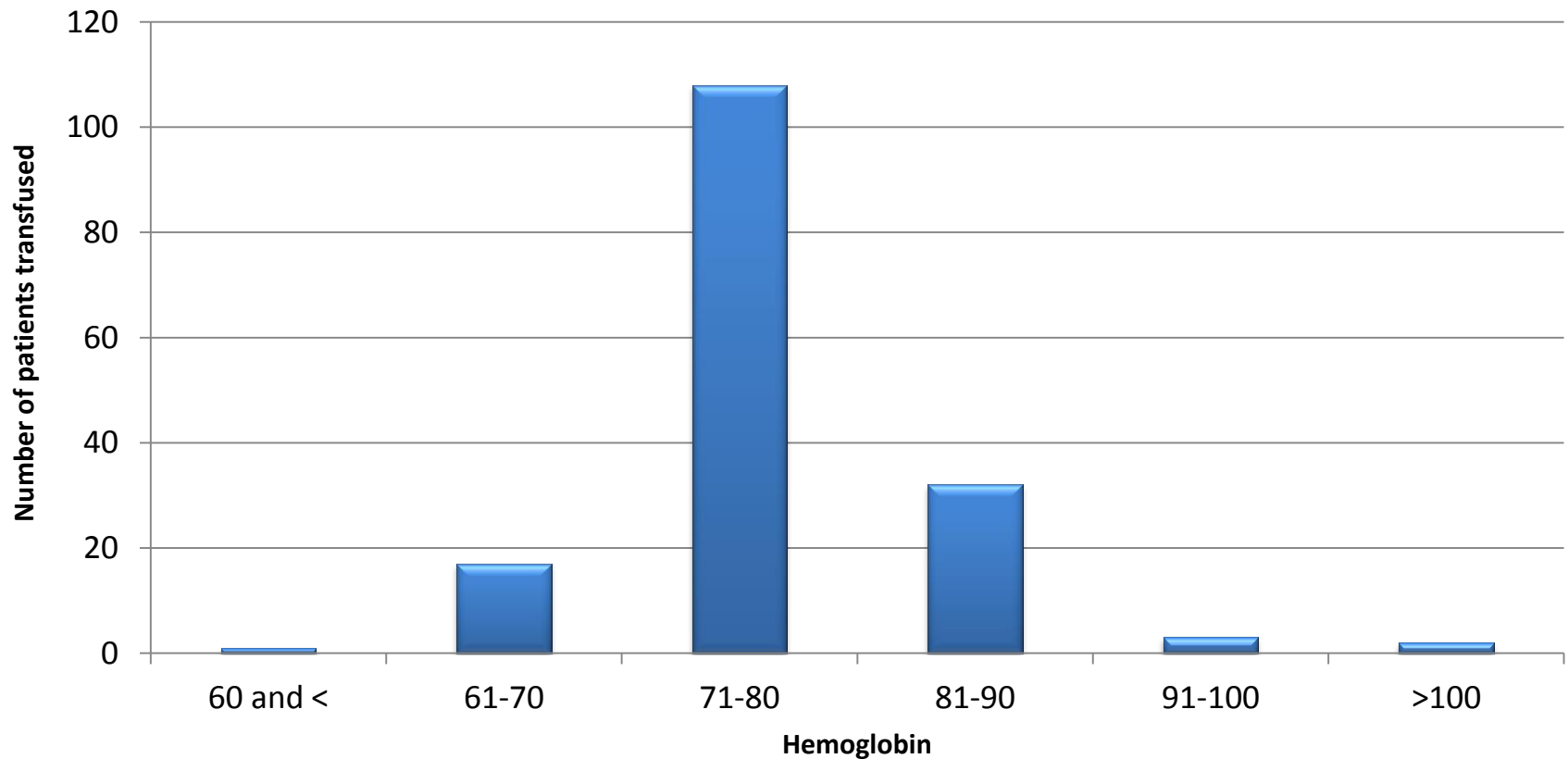
What overall percentage of patients receive a transfusion and when?

Percentage of patients requiring transfusion by post-op day



What are patients' hemoglobin levels when they are transfused?

Post-op hemoglobin prior to transfusion



Does the transfusion rate vary by surgeon?

Transfusion Rate by Surgeon

